



**ESCON**  
INFRA REALTORS



**PRIDE VILLAS**  
Sector Pi I, Greater Noida



# ABOUT US

The company was established with an objective to provide a whole range of Infrastructure Solutions. Since inception, we have been achieving continuous and substantial growth. The resources at Escon, both Human and Financial, and the Technical knowhow have grown in synchronize with the expansion of business and clients needs. Each project taken up by us is well assessed and linked with the Client's requirement. A workable program is then designed in an effective and efficient way that the targets of completion are achieved within timelines. Our success is ensured with mainly two things – one the dedicated, qualified and experienced workforce and our QUALITY of work. Our company is fully prepared to support the demands and challenges of a complex project in the ever-evolving industry. All our projects are located in the well developed Delhi-NCR Region, with connectivity to other parts of NCR. Some of our delivered projects are Park View Villas, Dench County, Silver Homes I, Dream Height 2, Escon Homez I, Escon Homes II etc.







# INFINITE POSSIBILITIES

## *Begin Here*

Escon Pride Villas is a premium integrated society located in Sector Pi 1, Greater Noida. Escon Pride Villas modern-day Residential Project provides all modern amenities which are necessary to maintain a high standard of living. We offer luxury villas in Greater Noida configurations of 3 BHK Villas in Sector Pi 1, Greater Noida. Check out the beautiful serenity and Connectivity.





# DELIVERED PROJECTS



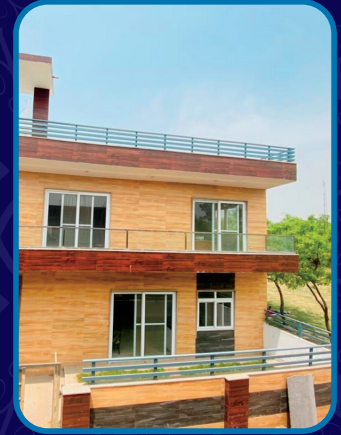
Dream Height



Silver Home



ZIF III



Park View Villa



Escon Homes



Dream height II



Ashiyana homes



## PROJECT HIGHLIGHT

Welcoming you to a home that you will cherish, you will easily recognize the residences as architecturally distinct. Exuding opulence and elegance, radiating style and uncompromising standards, the development is crafted using only the best-quality materials, state-of-the-art fittings and refined finishing touches. Exterior of the villa is a calm and serene area of outstanding natural beauty, offering complete privacy from the outside world. With so much spaciousness and greenery around you, you will never feel trapped even in the crowded city the overall atmosphere and experience of staying in a luxury villa. The best luxury villas are truly a spectacle to behold, with a unique character expressing itself in the overall aesthetic of the structure, its surroundings and the interior.



## LOCATION ADVANTAGE

Distance to GNIDA metro station	0 min drive
Amaze with Jaypee resorts & spa facility	2 min drive
Location Near - Yamuna Expressway	5 min Drive
Eastern Peripheral Expressway	5 min drive
Boraki Railway Station	6 min drive
Closer to Noida International Airport	20 min drive
Surrounded by major International Schools, Colleges & Universities	



# WHY TO INVEST IN ESCON PRIDE VILLAS?

Escon Pride Villas is a Premium Segment Villas that is just few minutes away from Noida. Low density Project consists of all the Sports amenities with full green lush landscaping and pollution-free environment. All independent villas are designed as per Vaastu-compliant structure. The whole development is located on strategic location giving proximity to all possible amenities. Pride Villas offers customization of interiors as per the premium choice of our elite clients. Pride Club brings soothing relaxation by enjoying in swimming pool where you are free to rejuvenate yourself with kids, also State of the Art Gym with best quality machines for you comfortable workout. A Party hall where you can mingle with your friends and you can enjoy every bit of moment with your family and loved ones.



**Customized Interiors**



**NO EMI till offer of Possession\***



**Exclusive club for 59 families**



# ESCON PRIDE ARCADE

Escon Pride Villas in Greater Noida is also offering one of the great commercial spaces in its vicinity as to fulfill all your requirements from daily needs. So, you need not to go anywhere, you can simply spend qualitative time by enjoying your lifestyle in premium villas with all world class amenities. You can simply reserve your time by enjoying amenities as **Escon Group** had built the whole concept in a way to make your life more simpler.





# AMENITIES



**Club House**



**Open Area**

**Gym**



**Security  
Guard**



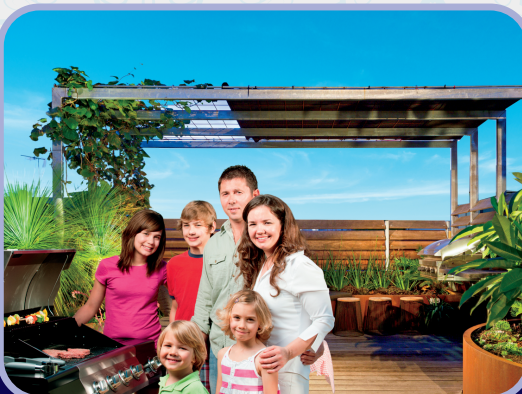
**24\*7 CCTV  
Surveillance**



**KIDS PLAY AREA**



**Swimming Pool**



**Roof Top Garden**





# MASTER PLAN

MAIN ROAD

MAIN ROAD

22 FT WIDE ROAD

22 FT WIDE ROAD

22 FT WIDE ROAD

22 FT WIDE ROAD

22 FT WIDE ROAD

22 FT WIDE ROAD

22 FT WIDE ROAD

22 FT WIDE ROAD

SCHOOL

OTHER PROPERTY

OTHER PROPERTY

OTHER PROPERTY





# VILLA 1 1850 Sq.ft.

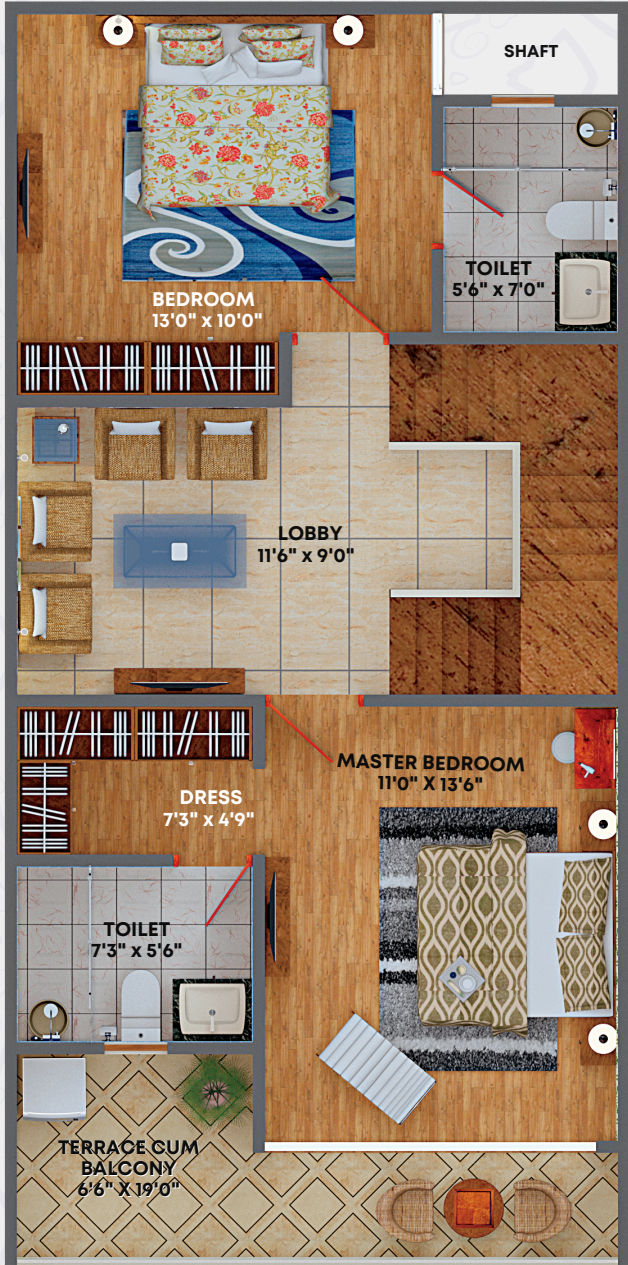




UNIT PLAN - GROUND FLOOR



UNIT PLAN - FIRST FLOOR



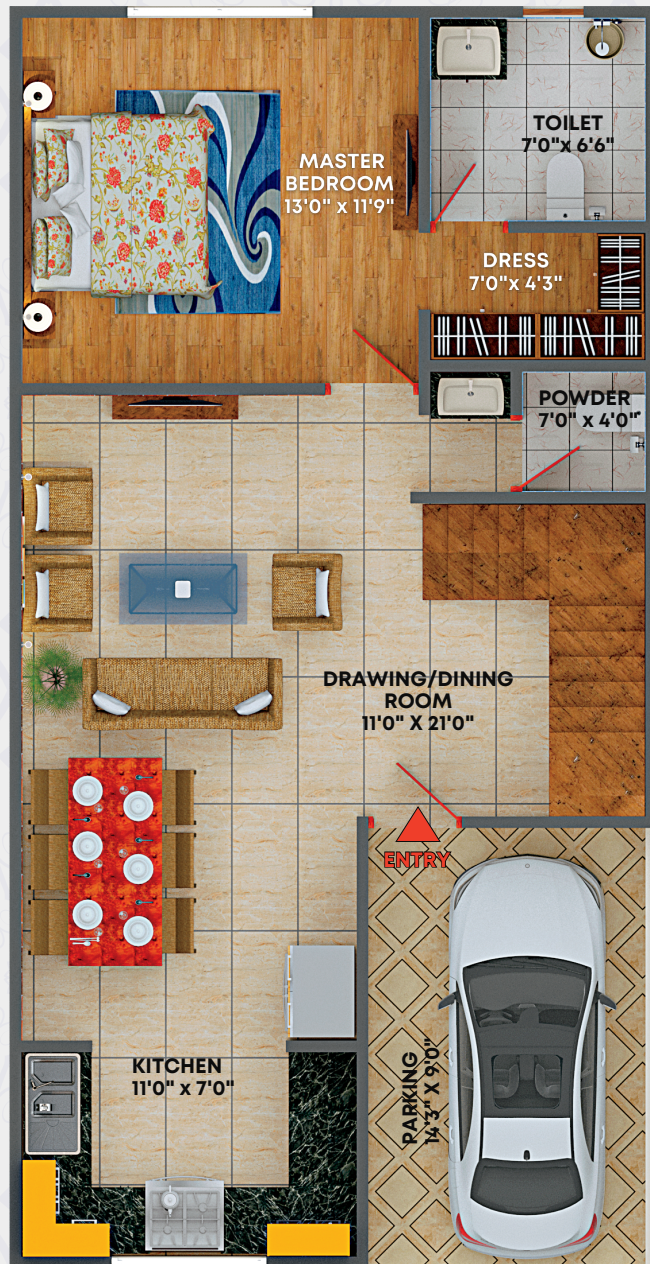


# VILLA 2 2250 Sq.Ft.





## UNIT PLAN - GROUND FLOOR



## UNIT PLAN - FIRST FLOOR







## Location

Escon Pride Villas, Sector Pi 1, Greater Noida, Uttar Pradesh 201310

[www.esconpridevillas.com](http://www.esconpridevillas.com)

LOCATION MAP

# SPECIFICATIONS

## Structure Work

Water-Proofing & Anti-Termite Solutions will be executed to secure the seepages & termite up-to plinth level and in all toilet & kitchen Areas of the Villa.

Reinforcement and the concrete grades will be executed as per the building laws with specific design and drawings given by Architect.

## Flooring

Bedrooms Flooring: Using **Verified Floor Tiles of 1200x600 mm** will be executed with PCC base.

Lobby, Kitchen and Drawing Area Flooring: Using Tiles. **Make = MORBI/ORIENT**

## Wooden Work

Frame (Chaukhats) Work: Using Ivory Teak Wood for Entrance Chaukhats and RedTeak Wood for internal Doors Frames with **8" X 2.5" & 5" X 2.5" sections. Finish - Sprit Polis.**

Hardware & Fittings: Using essential modular SS hardware fittings as required. **Make=Godrej Project Range/Link/Dorset.**

## Electrical Work

PVC Conducting Work: Using PVC conduit pipes in concealed conducting electrical cable Lines as per electrical Norms. **Make - RKG / AKG / SETIA / ANCHOR.**

**Modular Switches & Plates Work: Make - LEGRAND.**

## Plumbing Work

PVC & CPVC Pipelines Work: Using specific pipelines as per plumbing norms as per essential Needs. **Make - SUPREME/HINDWARE/ROCA.**

## Modular Kitchen Work

Under Counter & Over Head Units - **MR Grade 18 MM Ply & 0.8 MM Laminates Finish**

Kitchen Facia - Highgloss Laminates Finish. **Make -MERINOLAM/ VIRGOLAM/ CENTURY.**

## Paint & Polish Work

Internal Area - Combination of Plastic Emulsion and Wall Paper as per Design. **Make -Asian Paint/ Berger/Nerolac.**



FRONT VIEW

BEDROOM



MODERN KITCHEN

DRAWING ROOM



## Disclaimer:

While enough care is taken by The Escon to ensure that information on the brochure is accurate and correct and the content of this brochure is for general information purposes only. The information depicted herein, for e.g. master plans, floor plans, furniture layout, illustrations, specifications, designs, dimensions, rendered views, colours, amenities and facilities etc. are subject to change without notifications as may be required by the relevant authorities or the developer's architect, and cannot form part of an owner or contract. 1sq.mtr.=10.764 sq.ft.





 Sector Pi 1, Greater Noida, Uttar Pradesh (201310)

 [www.esconpridevillas.com](http://www.esconpridevillas.com)

Project approved and financed by



T&C apply\*